

MMO Switch to Cruise Initial Mode manually  
 File: JX-CRP-090.xls  
 Author: a.dietz-bc



## Procedure Summary

### Objectives

The objective of this OBCP is to manually switch the MMO to the MMO cruise initial mode (of the MMO cruise active mode) from the MMO cruise dormant mode. The procedure will take 50 seconds (with no wait times for TM checks).

Note in order to bring the MMO to Standby Mode either manually or via OBCP, the procedure JX-CRP-092 or JX-FCP-003 "MMO Operational Heater Control Start" has to be executed.

### Summary of Constraints

All MMO packets are delayed by 16 seconds towards the MPO, independent from the packet generation rate. Separation between MMO commands should be larger than 1 second (5 seconds are considered in this procedure).

### Spacecraft Configuration

#### Start of Procedure

MMO in Cruise Dormant Mode

#### End of Procedure

MMO in Cruise Initial Mode

### Reference File(s)

#### Input Command Sequences

#### Output Command Sequences

AJXC090A  
 AJXC090B

### Referenced Displays

ANDs GRDs SLDs  
 DJXA0001  
 DJXA0002

### Configuration Control Information

DATE	FOP ISSUE	VERSION	MODIFICATION DESCRIPTION	AUTHOR	SPR REF
23/02/2017		1	Created	a.dietz-bc	
12/04/2017		2	Updated after OBCP URD revision.	a.dietz-bc	
13/04/2017		2.01	Update of editorial points in steps 3.1 and 4.1 after JAXA comments	a.dietz-bc	

MMO Switch to Cruise Initial Mode manually  
File: JX-CRP-090.xls  
Author: a.dietz-bc

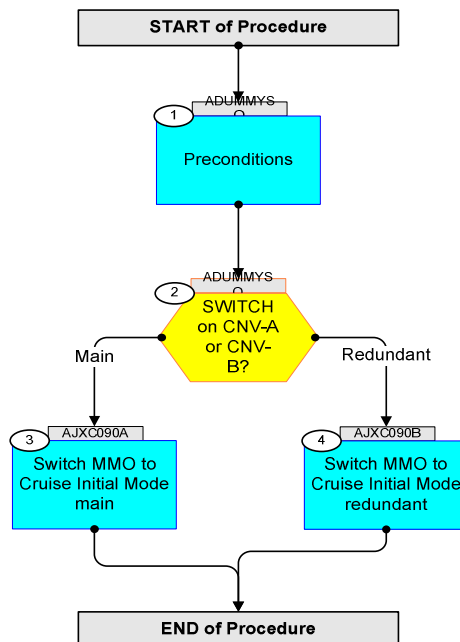


13/12/2017		3	Update after SVT-1b: added commands to enable MMO HK SID 2 in steps 3.5 and 3.5. Generated reports of the Service 12 and 19 tables to check the updated monitoring status in steps 3.6 and 4.6.	a.dietz-bc	
------------	--	---	---	------------	--

MMO Switch to Cruise Initial Mode manually  
File: JX-CRP-090.xls  
Author: a.dietz-bc



## Procedure Flowchart Overview



MMO Switch to Cruise Initial Mode manually  
 File: JX-CRP-090.xls  
 Author: a.dietz-bc



Step	Label/Time	Activity/Remarks/Branch	CK	Display
<b>Beginning of Procedure</b>				
Beginning of Sequence				
ADUMMYSQ      Preconditions TimeTag type : B				
1		<b>Preconditions</b> <b>Next step(s):</b> -> 2		
1.1		<b>Check MMO Temperatures</b>		
		Check that the MMO temperatures are within limits for switch-on to active mode: - CNV temperature is higher than -30degC and lower than 60degC. - DMC temperature is higher than -30degC and lower than 60degC. - PCD temperature is higher than -25degC and lower than 65degC. - MMO Lower Deck, XTRP-A temperature is higher than -30degC and lower than 60degC.		
		<b>Verify Telemetry</b> NRUD2070 MMO-TEMP-CNV-A > -30 degC < 60 degC		AND=DJXA0001 PKT=YCD0Z070
		<b>Verify Telemetry</b> NRUD2076 MMO-TEMP-DMC-A > -30 degC < 60 degC		AND=DJXA0001 PKT=YCD0Z070
		<b>Verify Telemetry</b> NRUD2074 MMO-TEMP-PCD-A > -25 degC < 65 degC		AND=DJXA0001 PKT=YCD0Z070
		<b>Verify Telemetry</b> NRUD3070 MMO-TEMP-LWD-A > -30 degC < 60 degC		AND=DJXA0001 PKT=YCD0Z071
1.2		<b>Check MMO in dormant mode</b>		

MMO Switch to Cruise Initial Mode manually  
 File: JX-CRP-090.xls  
 Author: a.dietz-bc



Step	Label/Time	Activity/Remarks/Branch	CK	Display
		Check that the MMO is in Cruise dormant mode.		
		<b>Verify Telemetry</b> NPWD1601 MMO-CNV-A-ON-ST = On		AND=DJXA0001 PKT=YCD0Z066
		<b>Verify Telemetry</b> NPWD1602 MMO-CNV-B-ON-ST = On		AND=DJXA0001 PKT=YCD0Z066
		<b>Verify Telemetry</b> NRUD4002 MMO_CNV_A_RLY_ST-A = Heater		AND=DJXA0001 PKT=YCD0Z068
		<b>Verify Telemetry</b> NRUD3002 MMO_CNV_B_RLY_ST-A = Heater		AND=DJXA0001 PKT=YCD0Z068
		If either:  NPWD1601 MMO_CNV_A_ON_ST = ON or NPWD1602 MMO_CNV_B_ON_ST = ON  and  NRUD4002 MMO_CNV_A_RLY_ST-A = MAIN NRUD3002 MMO_CNV_B_RLY_ST-A = MAIN NJXD0022 TCS_MODE_ST = STBY  the MMO is already in Cruise Initial Mode. Continue procedure in step 3.4.		
1.3		<b>Error handling</b>		
		If above preconditions are not fulfilled or if during the execution of the procedure, any command fails or any TM check is not as expected, abort this procedure and switch MMO back to cruise dormant mode by use of either procedure:  JX-CRP-091 MMO Switch to Cruise Dormant Mode manually JX-FCP-002 MMO Switch to Cruise Dormant Mode by OBCP		

MMO Switch to Cruise Initial Mode manually  
 File: JX-CRP-090.xls  
 Author: a.dietz-bc



Step	Label/Time	Activity/Remarks/Branch	CK	Display
2		SWITCH on CNV-A or CNV-B?  <i>Next step(s):</i> -> 3 Main -> 4 Redundant		
ADUMMYSQ		End of Sequence		
AJXC090A		Beginning of Sequence MMO to Initial MAIN  TimeTag type : B		
3		Switch MMO to Cruise Initial Mode main  <i>Next step(s):</i> -> END		
3.1		Switch off both MMO converters		
		Switch off both converters. This will bring MMO in launch mode with SED heaters operating.		
	+00.00.00	Execute Telecommand ZPW09008 PCDU MMO_CNV_A_LCL_OFF TC Control Flags: GBM IL DSE --Y -- ---		
		Verify Telemetry NPWD1601 MMO-CNV-A-ON-ST = Off		AND=DJXA0001 PKT=YCD0Z066
	+00.00.01	Execute Telecommand ZPW09010 PCDU MMO_CNV_B_LCL_OFF TC Control Flags: GBM IL DSE --Y -- ---		
		Verify Telemetry NPWD1602 MMO-CNV-B-ON-ST = Off		AND=DJXA0001 PKT=YCD0Z066

MMO Switch to Cruise Initial Mode manually  
File: JX-CRP-090.xls  
Author: a.dietz-bc



Step	Label/Time	Activity/Remarks/Branch	CK	Display
3.2		Switch CNV relays to MAIN		
		Switch MMO to main power supply. Note commands are sent via RIU A and B.		
	+00.00.01	<b>Execute Telecommand</b> ZR UW20A6 RIU MMO TC MMO_CNV_A_RLY_MAIN A TC Control Flags: GBM IL DSE --Y -- ---		
	+00.00.01	<b>Execute Telecommand</b> ZR UW20BE RIU MMO TC MMO_CNV_A_RLY_MAIN B TC Control Flags: GBM IL DSE --Y -- ---		
		<b>Verify Telemetry</b> NR UD4002 MMO_CNV_A_RLY_ST-A = Main		AND=DJXA0001 PKT=YCD0Z068
		<b>Verify Telemetry</b> NR UD9002 MMO_CNV_A_RLY_ST-B = Main		AND=DJXA0001 PKT=YCD0Z069
	+00.00.01	<b>Execute Telecommand</b> ZR UW2076 RIU MMO TC MMO_CNV_B_RLY_MAIN A TC Control Flags: GBM IL DSE --Y -- ---		
	+00.00.01	<b>Execute Telecommand</b> ZR UW208E RIU MMO TC MMO_CNV_B_RLY_MAIN B TC Control Flags: GBM IL DSE --Y -- ---		
		<b>Verify Telemetry</b> NR UD3002 MMO_CNV_B_RLY_ST-A = Main		AND=DJXA0001 PKT=YCD0Z068
		<b>Verify Telemetry</b> NR UD8002 MMO_CNV_B_RLY_ST-B = Main		AND=DJXA0001 PKT=YCD0Z069

MMO Switch to Cruise Initial Mode manually  
File: JX-CRP-090.xls  
Author: a.dietz-bc



Step	Label/Time	Activity/Remarks/Branch	CK	Display
3.3		Switch on CNV-A		
		Switch on CNV-A. This will bring MMO into Cruise Initial Mode.		
	+00.00.01	Execute Telecommand ZPW09009 PCDU MMO_CNV_A_LCL_ON TC Control Flags: GBM IL DSE --Y -- ---		
		Verify that the MMO is in Cruise Initial Mode, whereas only CNV-A shall be switched-on.		
		Verify Telemetry NPWD1601 MMO-CNV-A-ON-ST = On		AND=DJXA0001 PKT=YCD0Z066
		Verify Telemetry NPWD1602 MMO-CNV-B-ON-ST = Off		AND=DJXA0001 PKT=YCD0Z066
		Verify Telemetry NRUD4002 MMO_CNV_A_RLY_ST-A = Main		AND=DJXA0001 PKT=YCD0Z068
		Verify Telemetry NRUD3002 MMO_CNV_B_RLY_ST-A = Main		AND=DJXA0001 PKT=YCD0Z068
3.4		Enable CNV-A trip-off monitoring		
		Enable CNV-A trip-off monitoring and recovery action.		
	+00.00.01	Execute Telecommand ZCD00C01 DMS Enable User Monitoring TC Control Flags: GBM IL DSE --Y -- --- Command Parameters : PCG0C011 Number of Monitoring = 1 <dec> PCG0C012 User Monitoring ID = 60 <dec>		



MMO Switch to Cruise Initial Mode manually  
File: JX-CRP-090.xls  
Author: a.dietz-bc



Step	Label/Time	Activity/Remarks/Branch	CK	Display
	+00.00.01	<b>Execute Telecommand</b> <b>ZCD01304 DMS Enable Action(s)</b> TC Control Flags: GBM IL DSE --Y -- --- Command Parameters : <b>PCG13041</b> Number of Actions = 1 <dec> <b>PCG13042</b> PID emitter of Event = 10 <dec> <b>PCG13012</b> Event Identifier = 13110 <dec>		
3.5		Check MMO DMC status		
		Wait 30 seconds to ensure that the MMO RT is operational before enabling the MMO Milbus Interface.		
	+00.00.30	<b>Execute Telecommand</b> <b>ZCL0A903 CPL Enable Mmo Interface</b> TC Control Flags: GBM IL DSE --Y -- ---		
		Wait 1 second and enable MMO Macro Command. Note that macros need to be enabled to execute the following command to change the MMO HK generation rate.		
	+00.00.01	<b>Execute Telecommand</b> <b>ZJX00013 MMO DH_MC_START</b> TC Control Flags: GBM IL DSE --Y -- ---		
		Wait 5 seconds for MMO HK update.		
		<b>Verify Telemetry</b> <b>NJXD0012 DH_MC_ENA_DIS</b> = ENA		AND=DJXA0002 PKT=YCL0Z001
		Set the MMO public HK generation period to once every second and align generation rate of MPO generated MMO packet YCL0Z001 to the same value.  Note this has to be performed to avoid that MMO packets are lost or duplicated in the stream to ground, see NCR BC-ASD-NC-00369.		

MMO Switch to Cruise Initial Mode manually  
File: JX-CRP-090.xls  
Author: a.dietz-bc



Step	Label/Time	Activity/Remarks/Branch	CK	Display
	+00.00.05	<b>Execute Telecommand</b> <b>ZJX00011 MMO DH_OPE_MODE_HK_1S</b> TC Control Flags: GBM IL DSE --Y -- ---		
	+00.00.01	<b>Execute Telecommand</b> <b>ZCL00306 CPL Disable HK Telemetry Generation</b> TC Control Flags: GBM IL DSE --Y -- --- Command Parameters : <b>PCG03011 HK Packet Structure ID = 1 &lt;dec&gt;</b>		
	+00.00.01	<b>Execute Telecommand</b> <b>ZCL00381 CPL Define HK Report Generate Period</b> TC Control Flags: GBM IL DSE --Y -- --- Command Parameters : <b>PCG03011 HK Packet Structure ID = 1 &lt;dec&gt;</b> <b>PCG03012 Period in 8Hz cycles = 8 &lt;dec&gt;</b>		
	+00.00.01	<b>Execute Telecommand</b> <b>ZCL00305 CPL Enable HK Telemetry Generation</b> TC Control Flags: GBM IL DSE --Y -- --- Command Parameters : <b>PCG03011 HK Packet Structure ID = 1 &lt;dec&gt;</b>		
		Note: all MMO packets are delayed by 16 seconds towards the MPO, independent from the packet generation rate. For MIL-BUS communication, MMO collects packets internally for 16 seconds, and then sends the packets to MPO, which means all the packets are delayed about 16 seconds before being sent to MPO.		
		Verify Packet Reception <b>YCL0Z001 MMO HK</b> TM(3,25), APID 210 (13/2) PI1=1 PI2=0		
		In addition, enable the generation of packet YCL0Z002 (MMO function status), SID 2. The default generation rate will be once every 64 seconds. Both MMO HK packets will be received on VC2.		

MMO Switch to Cruise Initial Mode manually  
File: JX-CRP-090.xls  
Author: a.dietz-bc



Step	Label/Time	Activity/Remarks/Branch	CK	Display
	+00.00.01	<b>Execute Telecommand</b> <b>ZCL00305 CPL Enable HK Telemetry Generation</b> TC Control Flags: GBM IL DSE --Y -- --- Command Parameters : <b>PCG03011 HK Packet Structure ID = 2 &lt;dec&gt;</b>		
		Verify Packet Reception <b>YCL0Z002 MMO function status</b> TM(3,25), APID 210 (13/2) PII=2 PI2=0		
3.6		<b>Disable MMO temperature monitorings</b>		
		Disable MMO temperature monitorings and recovery action (monitoring shall be only active in MMO Cruise dormant mode).		
	+00.00.01	<b>Execute Telecommand</b> <b>ZCF00C02 PLTF Disable User Monitoring</b> TC Control Flags: GBM IL DSE --Y -- --- Command Parameters : <b>PCG0C011 Number of Monitoring = 19 &lt;dec&gt;</b> <b>PCG0C012 User Monitoring ID = 233 &lt;dec&gt;</b> <b>PCG0C012 User Monitoring ID = 234 &lt;dec&gt;</b> <b>PCG0C012 User Monitoring ID = 235 &lt;dec&gt;</b> <b>PCG0C012 User Monitoring ID = 236 &lt;dec&gt;</b> <b>PCG0C012 User Monitoring ID = 237 &lt;dec&gt;</b> <b>PCG0C012 User Monitoring ID = 238 &lt;dec&gt;</b> <b>PCG0C012 User Monitoring ID = 239 &lt;dec&gt;</b> <b>PCG0C012 User Monitoring ID = 240 &lt;dec&gt;</b>  <b>PCG0C012 User Monitoring ID = 241 &lt;dec&gt;</b> <b>PCG0C012 User Monitoring ID = 242 &lt;dec&gt;</b> <b>PCG0C012 User Monitoring ID = 243 &lt;dec&gt;</b> <b>PCG0C012 User Monitoring ID = 244 &lt;dec&gt;</b> <b>PCG0C012 User Monitoring ID = 245 &lt;dec&gt;</b> <b>PCG0C012 User Monitoring ID = 246 &lt;dec&gt;</b> <b>PCG0C012 User Monitoring ID = 247 &lt;dec&gt;</b> <b>PCG0C012 User Monitoring ID = 248 &lt;dec&gt;</b> <b>PCG0C012 User Monitoring ID = 251 &lt;dec&gt;</b> <b>PCG0C012 User Monitoring ID = 252 &lt;dec&gt;</b> <b>PCG0C012 User Monitoring ID = 253 &lt;dec&gt;</b>		

MMO Switch to Cruise Initial Mode manually  
File: JX-CRP-090.xls  
Author: a.dietz-bc



Step	Label/Time	Activity/Remarks/Branch	CK	Display
	+00.00.01	<b>Execute Telecommand</b> <b>ZCF01305 PLTF Disable Action(s)</b> TC Control Flags: GBM IL DSE --Y -- --- Command Parameters : <b>PCG13041</b> Number of Actions = 1 <dec> <b>PCG13042</b> PID emitter of Event = 12 <dec> <b>PCG13012</b> Event Identifier = 21638 <dec>		
		Generate a report of the Service 12 and 19 tables to check the updated monitoring status.		
	+00.00.01	<b>Execute Telecommand</b> <b>ZCL00380 CPL Request one HK Parameters Report</b> TC Control Flags: GBM IL DSE --Y -- --- Command Parameters : <b>PCG03011</b> HK Packet Structure ID = 74 <dec>		
	+00.00.01	<b>Execute Telecommand</b> <b>ZCL00380 CPL Request one HK Parameters Report</b> TC Control Flags: GBM IL DSE --Y -- --- Command Parameters : <b>PCG03011</b> HK Packet Structure ID = 75 <dec>		
		Verify Packet Reception <b>YCL1Z074 DMS S12 tables</b> TM(3,25), APID 212 (13/4) PI1=74 PI2=0		
		Verify Packet Reception <b>YCL1Z075 DMS S19 tables</b> TM(3,25), APID 212 (13/4) PI1=75 PI2=0		
<b>AJXC090A</b> End of Sequence				
Beginning of Sequence				
<b>AJXC090B</b> <b>MMO to Initial RED</b>  TimeTag type : B				
4		Switch MMO to Cruise Initial Mode redundant  <b>Next step(s):</b> -> END		

MMO Switch to Cruise Initial Mode manually  
File: JX-CRP-090.xls  
Author: a.dietz-bc



Step	Label/Time	Activity/Remarks/Branch	CK	Display
4.1		Switch off both MMO converters		
		Switch off both converters. This will bring MMO in launch mode with SED heaters operating.		
	+00.00.00	Execute Telecommand ZPW09008 PCDU MMO_CNV_A_LCL_OFF TC Control Flags: GBM IL DSE --Y -- ---		
		Verify Telemetry NPWD1601 MMO-CNV-A-ON-ST = Off		AND=DJXA0001 PKT=YCD0Z066
	+00.00.01	Execute Telecommand ZPW09010 PCDU MMO_CNV_B_LCL_OFF TC Control Flags: GBM IL DSE --Y -- ---		
		Verify Telemetry NPWD1602 MMO-CNV-B-ON-ST = Off		AND=DJXA0001 PKT=YCD0Z066
4.2		Switch CNV relays to MAIN		
		Switch MMO to main power supply.  Note commands are sent via RIU A and B.		
	+00.00.01	Execute Telecommand ZR UW20A6 RIU MMO TC MMO_CNV_A_RLY_MAIN A TC Control Flags: GBM IL DSE --Y -- ---		
	+00.00.01	Execute Telecommand ZR UW20BE RIU MMO TC MMO_CNV_A_RLY_MAIN B TC Control Flags: GBM IL DSE --Y -- ---		

MMO Switch to Cruise Initial Mode manually  
File: JX-CRP-090.xls  
Author: a.dietz-bc



Step	Label/Time	Activity/Remarks/Branch	CK	Display
		<b>Verify Telemetry</b> NRUD4002 MMO_CNV_A_RLY_ST-A = Main		AND=DJXA0001 PKT=YCD0Z068
		<b>Verify Telemetry</b> NRUD9002 MMO_CNV_A_RLY_ST-B = Main		AND=DJXA0001 PKT=YCD0Z069
	+00.00.01	<b>Execute Telecommand</b> ZRUW2076 RIU MMO TC MMO_CNV_B_RLY_MAIN A TC Control Flags: GBM IL DSE --Y -- ---		
	+00.00.01	<b>Execute Telecommand</b> ZRUW208E RIU MMO TC MMO_CNV_B_RLY_MAIN B TC Control Flags: GBM IL DSE --Y -- ---		
		<b>Verify Telemetry</b> NRUD3002 MMO_CNV_B_RLY_ST-A = Main		AND=DJXA0001 PKT=YCD0Z068
		<b>Verify Telemetry</b> NRUD8002 MMO_CNV_B_RLY_ST-B = Main		AND=DJXA0001 PKT=YCD0Z069
4.3		Switch on CNV-B		
		Switch on CNV-B. This will bring MMO into Cruise Initial Mode.		
	+00.00.01	<b>Execute Telecommand</b> ZPW09011 PCDU MMO_CNV_B_LCL_ON TC Control Flags: GBM IL DSE --Y -- ---		
		Verify that the MMO is in Cruise Initial Mode, whereas only CNV-B shall be switched-on.		
		<b>Verify Telemetry</b> NPWD1601 MMO-CNV-A-ON-ST = Off		AND=DJXA0001 PKT=YCD0Z066

MMO Switch to Cruise Initial Mode manually  
File: JX-CRP-090.xls  
Author: a.dietz-bc



Step	Label/Time	Activity/Remarks/Branch	CK	Display
		<b>Verify Telemetry</b> <b>NPWD1602</b> MMO-CNV-B-ON-ST = On		AND=DJXA0001 PKT=YCD0Z066
		<b>Verify Telemetry</b> <b>NRUD4002</b> MMO_CNV_A_RLY-ST-A = Main		AND=DJXA0001 PKT=YCD0Z068
		<b>Verify Telemetry</b> <b>NRUD3002</b> MMO_CNV_B_RLY-ST-A = Main		AND=DJXA0001 PKT=YCD0Z068
4.4		Enable CNV-B trip-off monitoring		
		Enable CNV-B trip-off monitoring and recovery action.		
	+00.00.01	<b>Execute Telecommand</b> <b>ZCD00C01 DMS Enable User Monitoring</b> TC Control Flags: GBM IL DSE --Y -- --- Command Parameters : <b>PCG0C011</b> Number of Monitoring = 1 <dec> <b>PCG0C012</b> User Monitoring ID = 61 <dec>		
	+00.00.01	<b>Execute Telecommand</b> <b>ZCD01304 DMS Enable Action(s)</b> TC Control Flags: GBM IL DSE --Y -- --- Command Parameters : <b>PCG13041</b> Number of Actions = 1 <dec> <b>PCG13042</b> PID emitter of Event = 10 <dec> <b>PCG13012</b> Event Identifier = 13111 <dec>		
4.5		Check MMO DMC status		
		Wait 30 seconds to ensure that the MMO RT is operational before enabling the MMO Milbus Interface.		

MMO Switch to Cruise Initial Mode manually  
File: JX-CRP-090.xls  
Author: a.dietz-bc



Step	Label/Time	Activity/Remarks/Branch	CK	Display
	+00.00.30	<b>Execute Telecommand</b> <b>ZCL0A903 CPL Enable Mmo Interface</b> TC Control Flags: GBM IL DSE --Y -- ---		
		Wait 1 second and enable MMO Macro Command. Note that macros need to be enabled to execute the following command to change the MMO HK generation rate.		
	+00.00.01	<b>Execute Telecommand</b> <b>ZJX00013 MMO DH_MC_START</b> TC Control Flags: GBM IL DSE --Y -- ---		
		Wait 5 seconds for MMO HK update.		
		<b>Verify Telemetry</b> <b>NJXD0012 DH_MC_ENA_DIS</b> = ENA		AND=DJXA0002 PKT=YCL0Z001
		Set the MMO public HK generation period to once every second and align generation rate of MPO generated MMO packet YCL0Z001 to the same value.  Note this has to be performed to avoid that MMO packets are lost or duplicated in the stream to ground, see NCR BC-ASD-NC-00369.		
	+00.00.05	<b>Execute Telecommand</b> <b>ZJX00011 MMO DH_OPE_MODE_HK_1S</b> TC Control Flags: GBM IL DSE --Y -- ---		
	+00.00.01	<b>Execute Telecommand</b> <b>ZCL00306 CPL Disable HK Telemetry Generation</b> TC Control Flags: GBM IL DSE --Y -- --- Command Parameters : <b>PCG03011 HK Packet Structure ID = 1 &lt;dec&gt;</b>		



MMO Switch to Cruise Initial Mode manually  
File: JX-CRP-090.xls  
Author: a.dietz-bc



Step	Label/Time	Activity/Remarks/Branch	CK	Display
	+00.00.01	<b>Execute Telecommand</b> <b>ZCL00381 CPL Define HK Report Generate Period</b> TC Control Flags: GBM IL DSE --Y -- --- Command Parameters : <b>PCG03011 HK Packet Structure ID = 1 &lt;dec&gt;</b> <b>PCG03012 Period in 8Hz cycles = 8 &lt;dec&gt;</b>		
	+00.00.01	<b>Execute Telecommand</b> <b>ZCL00305 CPL Enable HK Telemetry Generation</b> TC Control Flags: GBM IL DSE --Y -- --- Command Parameters : <b>PCG03011 HK Packet Structure ID = 1 &lt;dec&gt;</b>		
		Note: all MMO packets are delayed by 16 seconds towards the MPO, independent from the packet generation rate. For MIL-BUS communication, MMO collects packets internally for 16 seconds, and then sends the packets to MPO, which means all the packets are delayed about 16 seconds before being sent to MPO.		
		Verify Packet Reception <b>YCL0Z001 MMO HK</b> TM(3,25), APID 210 (13/2) PI1=1 PI2=0		
		In addition, enable the generation of packet YCL0Z002 (MMO function status), SID 2. The default generation rate will be once every 64 seconds. Both MMO HK packets will be received on VC2.		
	+00.00.01	<b>Execute Telecommand</b> <b>ZCL00305 CPL Enable HK Telemetry Generation</b> TC Control Flags: GBM IL DSE --Y -- --- Command Parameters : <b>PCG03011 HK Packet Structure ID = 2 &lt;dec&gt;</b>		
		Verify Packet Reception <b>YCL0Z002 MMO function status</b> TM(3,25), APID 210 (13/2) PI1=2 PI2=0		
4.6		<b>Disable MMO temperature monitorings</b>		

MMO Switch to Cruise Initial Mode manually

File: JX-CRP-090.xls

Author: a.dietz-bc



Step	Label/Time	Activity/Remarks/Branch	CK	Display
		Disable MMO temperature monitorings and recovery action (monitoring shall be only active in MMO Cruise dormant mode).		
	+00.00.01	<b>Execute Telecommand</b> <b>ZCF00C02 PLTF Disable User Monitoring</b> TC Control Flags: GBM IL DSE --Y -- --- Command Parameters : <b>PCG0C011</b> Number of Monitoring = 19 <dec> <b>PCG0C012</b> User Monitoring ID = 233 <dec> <b>PCG0C012</b> User Monitoring ID = 234 <dec> <b>PCG0C012</b> User Monitoring ID = 235 <dec> <b>PCG0C012</b> User Monitoring ID = 236 <dec> <b>PCG0C012</b> User Monitoring ID = 237 <dec> <b>PCG0C012</b> User Monitoring ID = 238 <dec> <b>PCG0C012</b> User Monitoring ID = 239 <dec> <b>PCG0C012</b> User Monitoring ID = 240 <dec>  <b>PCG0C012</b> User Monitoring ID = 241 <dec> <b>PCG0C012</b> User Monitoring ID = 242 <dec> <b>PCG0C012</b> User Monitoring ID = 243 <dec> <b>PCG0C012</b> User Monitoring ID = 244 <dec> <b>PCG0C012</b> User Monitoring ID = 245 <dec> <b>PCG0C012</b> User Monitoring ID = 246 <dec> <b>PCG0C012</b> User Monitoring ID = 247 <dec> <b>PCG0C012</b> User Monitoring ID = 248 <dec> <b>PCG0C012</b> User Monitoring ID = 251 <dec> <b>PCG0C012</b> User Monitoring ID = 252 <dec> <b>PCG0C012</b> User Monitoring ID = 253 <dec>		
	+00.00.01	<b>Execute Telecommand</b> <b>ZCF01305 PLTF Disable Action(s)</b> TC Control Flags: GBM IL DSE --Y -- --- Command Parameters : <b>PCG13041</b> Number of Actions = 1 <dec> <b>PCG13042</b> PID emitter of Event = 12 <dec> <b>PCG13012</b> Event Identifier = 21638 <dec>		
		Generate a report of the Service 12 and 19 tables to check the updated monitoring status.		
	+00.00.01	<b>Execute Telecommand</b> <b>ZCL00380 CPL Request one HK Parameters Report</b> TC Control Flags: GBM IL DSE --Y -- --- Command Parameters : <b>PCG03011</b> HK Packet Structure ID = 74 <dec>		

MMO Switch to Cruise Initial Mode manually

File: JX-CRP-090.xls

Author: a.dietz-bc



Step	Label/Time	Activity/Remarks/Branch	CK	Display
	+00.00.01	<b>Execute Telecommand</b> <b>ZCL00380 CPL Request one HK Parameters Report</b> TC Control Flags: GBM IL DSE --Y -- --- Command Parameters : <b>PCG03011 HK Packet Structure ID = 75 &lt;dec&gt;</b>		
		Verify Packet Reception <b>YCL1Z074 DMS S12 tables</b> TM(3,25), APID 212 (13/4) PI1=74 PI2=0		
		Verify Packet Reception <b>YCL1Z075 DMS S19 tables</b> TM(3,25), APID 212 (13/4) PI1=75 PI2=0		
<b>AJXC090B</b>		End of Sequence		
<b>End of Procedure</b>				